

# Triple Connie™ Turbo

## LONG GARMENT PRESS...

High quality finally meets high production for the retail medical and uniform linen supply markets; Doctors' Coats, Smocks, Lab Coats, Nurses' Pullovers, Chef Coats, Frocks and Executive Shirts. All pressed with legendary Colmac quality.

- Single cylinder pressing system assures consistent, even pressure to both chests resulting in a superior finish
- Simple, reliable, automatic garment unloading system encourages maximum production (up to 240 garments per hour) with a single operator
- Advanced, Servo motor drive system provides precise mannequin placement every cycle
- Nickel-plated pressing chests (manufactured and plated by Colmac) are contoured to give the highest quality finish
- PLC controlled for precise, dependable mechanical operation
- Vacuum diverter system holds garment securely next to the mannequin during transfer to pressing station
- Easy to load – the operator can “get up close” to the mannequins
- New operator interface touch screen with four custom configured programs. Allows infinitely adjustable machine settings along with valuable maintenance and troubleshooting screens
- Automatic seek home function prevents costly readjustment and alignment issues that are very common with competing machines
- Comes with the best service in the industry
- Standard two-year limited warranty

Ask about our leasing options.

### Specifications:

Shipping Weight	5650 lb (2568 Kg)
Voltage (Amperage)	208/60/3 (55 A) 230/60/3 (50 A) 380/50/3 (30 A) 460/60/3 (25 A)
Main Blower Motor:	5 HP (3.73 kW)
Vacuum Motor:	7 HP (5.22 kW)
Exhaust Blower Motor (Optional):	0.33 HP (0.246 kW)

### Steam

Steam Connection:	1.5 inch NPT (39.11 mm)
Condensate Return Connection:	0.75 inches NPT (19.05 mm)
Supply Pressure:	65-125 PSI (4.49 – 8.63 BAR)
Consumption Maximum:	12 BHP (188 Kg)
Steam Traps:	Included

### Compressed Air

Line Connection:	½ inch NPT (13 mm)
Supply Pressure:	100 PSI (6.89 BAR)
Consumption, Maximum:	8.30 SCFM (0.49 L/second)



*“The Colmac Triple Connie™ Turbo gives you dry clean quality with industrial laundry production.”*

**Izzy Castro, Director of Engineering  
Mission Linen Supply**

*“The Colmac Triple Connie™ Turbo has consistently produced good quality with better efficiency.”*

**George Deindorfer, General Manager  
ALSCO**

### Popular Options:

- Exhaust blower system
- Electronic garment counter
- Hand-held water spray gun
- Two-station sort

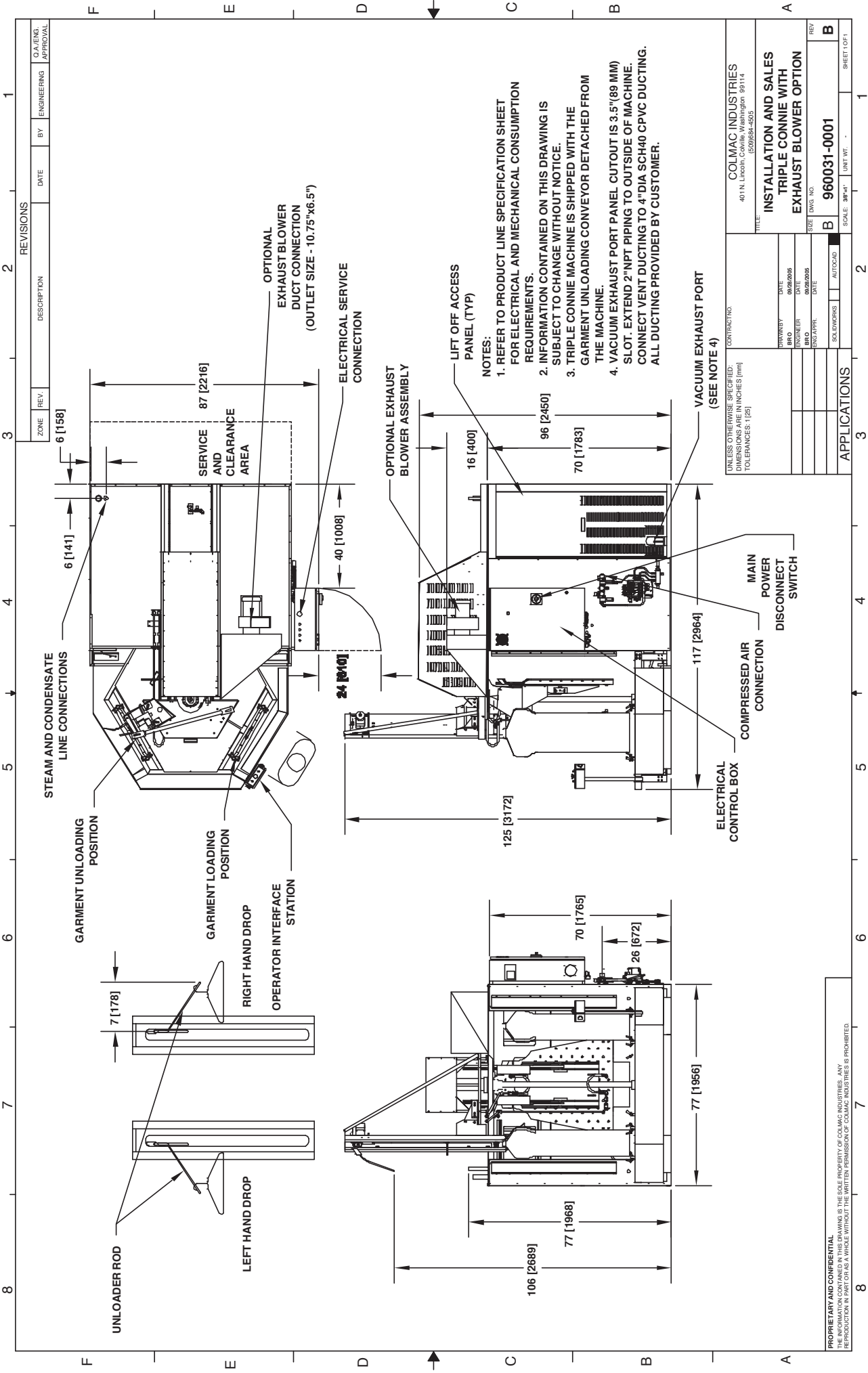
### Companion Products:

- Collar 'n Cuff Press
- Collar Press
- Laser Sleeve Press



P.O. Box 72 • Colville, WA 99114 USA  
Tel: (509) 684-4505 • (800) 926-5622 • Fax: (509) 684-4500  
E-mail: sales@colmacind.com • Web site: www.colmacind.com

*... Start with accuracy, finish with quality*



REVISIONS		DATE	BY	ENGINEERING	O.A./E.M.S. APPROVAL
ZONE	REV.	DESCRIPTION			

STEAM AND CONDENSATE LINE CONNECTIONS

GARMENT UNLOADING POSITION

GARMENT LOADING POSITION

RIGHT HAND DROP

LEFT HAND DROP

UNLOADER ROD

OPERATOR INTERFACE STATION

SERVICE AND CLEARANCE AREA

OPTIONAL EXHAUST BLOWER DUCT CONNECTION (OUTLET SIZE - 10.75"X6.5")

ELECTRICAL SERVICE CONNECTION

OPTIONAL EXHAUST BLOWER ASSEMBLY

LIFT OFF ACCESS PANEL (TYP)

96 [2450]

70 [1783]

16 [400]

117 [2964]

VACUUM EXHAUST PORT (SEE NOTE 4)

MAIN POWER DISCONNECT SWITCH

COMPRESSED AIR CONNECTION

ELECTRICAL CONTROL BOX

125 [3172]

24 [610]

40 [1008]

6 [141]

6 [158]

87 [2216]

77 [1968]

106 [2689]

77 [1956]

26 [672]

70 [1765]

- NOTES:
1. REFER TO PRODUCT LINE SPECIFICATION SHEET FOR ELECTRICAL AND MECHANICAL CONSUMPTION REQUIREMENTS.
  2. INFORMATION CONTAINED ON THIS DRAWING IS SUBJECT TO CHANGE WITHOUT NOTICE.
  3. TRIPLE CONNIE MACHINE IS SHIPPED WITH THE GARMENT UNLOADING CONVEYOR DETACHED FROM THE MACHINE.
  4. VACUUM EXHAUST PORT PANEL CUTOUT IS 3.5"(89 MM) SLOT. EXTEND 2" NPT PIPING TO OUTSIDE OF MACHINE. CONNECT VENT DUCTING TO 4" DIA SCH40 CPVC DUCTING. ALL DUCTING PROVIDED BY CUSTOMER.

UNLESS OTHERWISE SPECIFIED, DIMENSIONS ARE IN INCHES (mm) TOLERANCES: 1 [25]		CONTRACT NO.		COLMAC INDUSTRIES 401 N. Lincoln St. COLUMBIANA, OHIO 43081-9914	
DATE	DATE	DATE	DATE	DATE	DATE
DESIGNED BY	ENGINEER	DATE	DATE	DATE	DATE
CHECKED BY	DATE	DATE	DATE	DATE	DATE
SCALE: 3/8"=1"	UNIT WT.	SCALE: 3/8"=1"	UNIT WT.	SCALE: 3/8"=1"	UNIT WT.
TITLE: INSTALLATION AND SALES TRIPLE CONNIE WITH EXHAUST BLOWER OPTION			REV. B		
DRAWING NO. 960031-0001			SHEET 1 OF 1		

PROPRIETARY AND CONFIDENTIAL  
THIS DRAWING IS THE SOLE PROPERTY OF COLMAC INDUSTRIES. ANY REPRODUCTION IN PART OR AS A WHOLE WITHOUT THE WRITTEN PERMISSION OF COLMAC INDUSTRIES IS PROHIBITED.