

# Colmac Topper durable by design

**FOR FINISHING THE TOPS OF PANTS, TROUSERS, SLACKS, SKIRTS, SHORTS...**

One source for your finishing needs:

Legger, automated presses, tunnel finishers, hanging systems...

- Faster cycle time increases productivity rates
- Ergonomically designed to reduce fatigue and increase production
- Latest PLC technology
- Few moving parts and easy accessibility
- Designed for safety, ease of operation, speed and dependability
- Automatic waist expander for pants from 26 to 54 inch (660 to 1372 mm)
- Standard two-year parts warranty
- Backed by the Best Service in the Industry



Features	Benefits
Largest motor, blower, and heat-exchanger coil package in the industry	Optimized air chamber for maximized airflow with consistent heat for quick drying and fast wrinkle removal
Adjustable height foot pads	Provides the operator with an ergonomic working position and unit stability on uneven floors.
Latest PLC technology by Allen Bradley/ Rockwell. Memory module backup.	Allows total finishing program versatility to adapt over time to changing fabrics, fibers, fiber blends, and styles. High reliability and repeatability.
Only four, easy to get to, moving parts	Repeatable quality, ease of service, less downtime
Stainless steel top and copper steam circuit	Built to last
Adjustable motor mount	Multiple belt sizes can be used. Not limited to one size belt.
Easy setup and maintenance	Electronics and steam connections are placed in easily accessible locations. Quick panel removal for full access.
Blower-ON pushbutton	Keeps blower on indefinitely to extend drying time when necessary
Add-ON steam pushbutton	Adds an additional 5 seconds of live steam to the finishing cycle, providing additional wrinkle removal
Waist holder	Holds the garment in place while the waist expander is relaxed, aiding in operator efficiency
Automatic Waist Expander with foot switch operation	Adjustable pressure, hands-free activation (foot switch) with fluid ergonomic motion
Vacuum* activation	Provides extra drying capability, especially important in the crotch and pocket areas. Allows for faster garment positioning and removal, increasing productivity.



P.O. Box 72 • Colville, WA 99114 USA  
 Tel: (509) 684-4505 • (800) 926-5622 • Fax: (509) 684-4500  
 E-mail: sales@colmacind.com • Web site: www.colmacind.com

*...Start with accuracy, finish with quality*

## Specifications:

### Electrical Requirements:

Voltage/Cycles/Phase	115/60/1	100/50/1
Supply Amperage Fuse	12	12

### Steam Requirements:

Steam Connection	1 inch NPT	25 mm NPT
Condensate Return Connection	3/4 inch NPT	19 mm NPT
Supply Pressure: Minimum	100 PSI	7 BAR
Supply Pressure: Maximum	125 PSI	8.6 BAR
Consumption Maximum	2.5 BHP	1.9 Kw

### Vacuum Requirements:

Line Size ID	2 inches	51 mm
Vacuum: Minimum	5 inches @ 350 SCFM	114 mm @ 10m <sup>3</sup> /minute
Consumption: Maximum	0.12 SCFM	3.4 L/minute

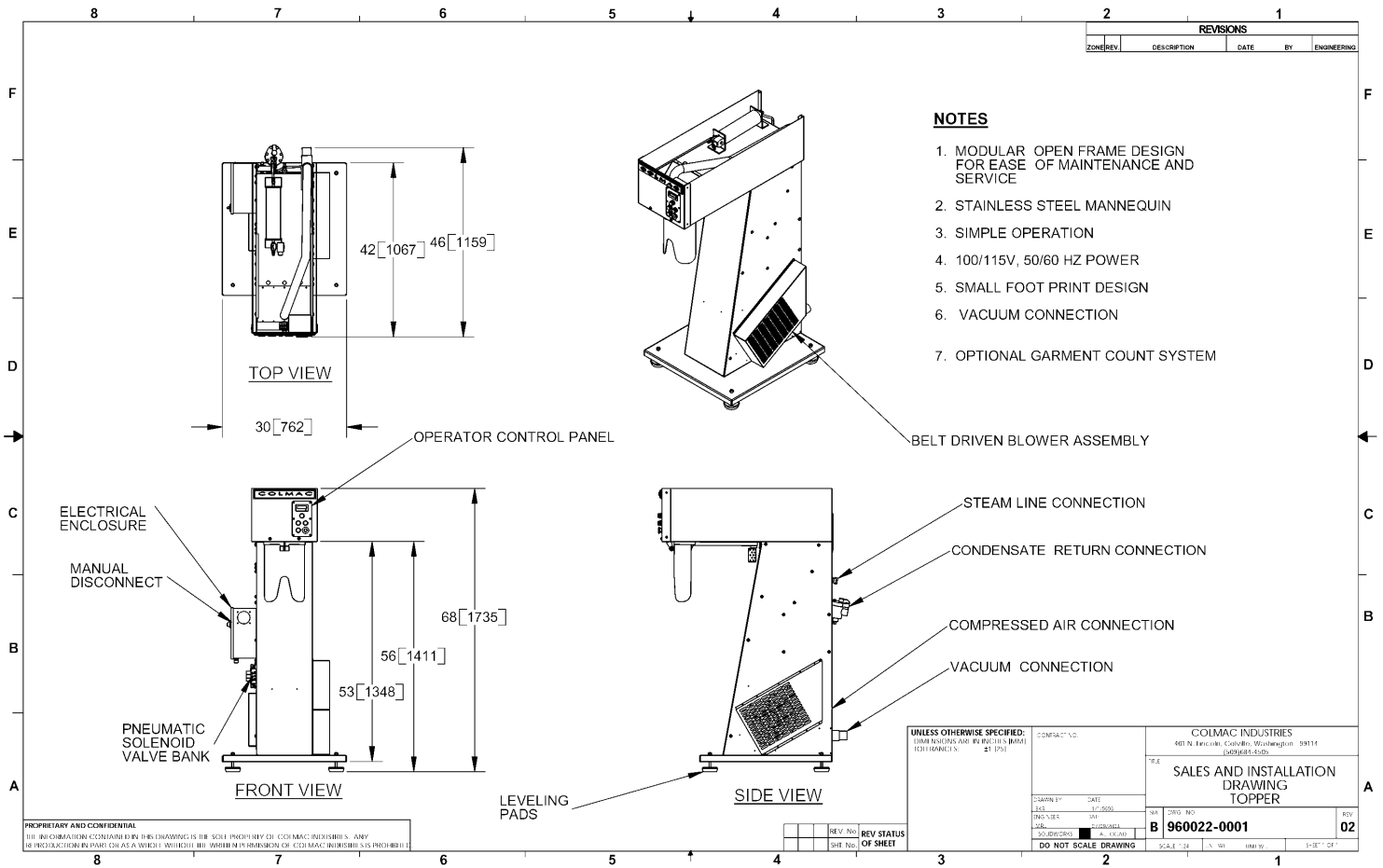
### Compressed Air Requirements:

Connection	1/4 inch	6 mm NPT
Supply Pressure Maximum	100 PSI	7 BAR
Consumption at 40 psi (2.8 BAR)	1 SCFM	28 L/minute

## Options:

- Counter: Used to track how many garments have been finished
- Transformer for 220/50/1 electrical
- Pleat pads

Companion product: BuckUp Legger, a Pant / Utility / Hothead Press



Form CI-0108 Topper, Version A. Effective August 2003. (Revised October 2008). © All rights reserved.