



## THE CONVEYOR SYSTEM THAT KNOWS WHEN TO STOP, SO YOU DON'T.

Colmac Industries offers one of our latest engineering innovations; a conveyor system that tells you when there is trouble. We call it the "Smart-Veyor."

The Smart-Veyor is "smart" enough to turn itself off if:

- The conveyor becomes jammed and the protective drive clutch slips
- Air pressure is insufficient to maintain proper chain tension
- A hanger gets past the unloader

### Automatic chain tensioning

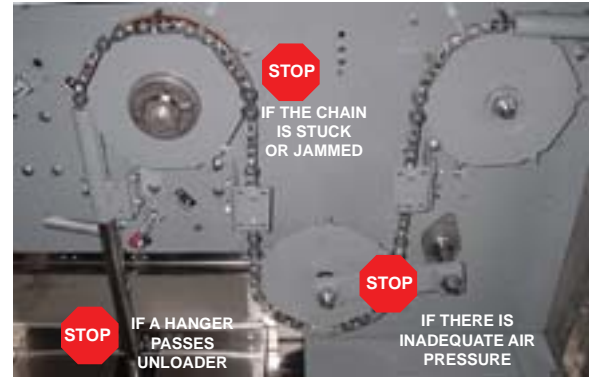
Pneumatic cylinder provides proper chain tension automatically to eliminate downtime, due to a sloppy chain and reduce chain wear

### Conveyor/Burner interlock

Reduces tunnel temperature when conveyor stops for any reason to protect your garments from being damaged by overheating

- Durable, efficient, variable speed DC drive motor
- Flashing beacon alerts operators in the event of a conveyor problem
- Easy to read digital rate indicator shows pendants per hour

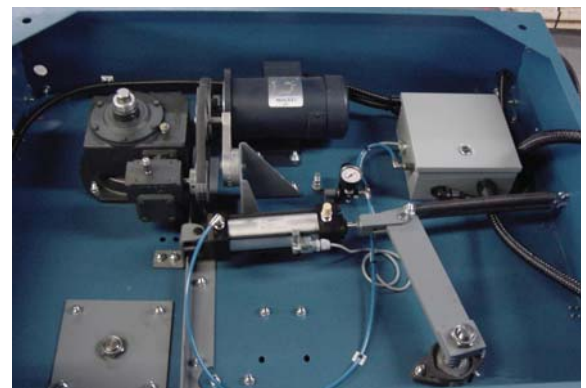
The Smart-Veyor is another innovation that comes from customer suggestions. We thank all of you who take the time to give us your thoughts and suggestions so that we can continue to improve our products.



Attached to the exit end of tunnel



A Stand Alone frame is available



Top view of Smart-Veyor components



P.O. Box 72 • Colville, WA 99114 USA  
Tel: (509) 684-4505 • (800) 926-5622 • Fax: (509) 684-4500

E-mail: [sales@colmacind.com](mailto:sales@colmacind.com)

Web site: [www.colmacind.com](http://www.colmacind.com)

... Start with accuracy, finish with quality