

# Infiniti Series

For the Apparel Industry, Garment Manufacturing, Garment Importers and Retail Distribution

The Infiniti is a garment steam-air finishing system with a steaming chamber and temperature controlled, gas- or steam-heated finishing chamber through which garments are carried on a continuously operating conveyor system.

The Colmac automatic two-step finishing cycle combines steam injection with the highest volume, fastest moving air delivery system available for superior de-wrinkling results on today's garments and fabric items.



Infiniti Model 2100-2 AGS shown

Feature	Benefit
Infiniti no-drop hanger conveyor	It won't drop a hanger, ever, eliminating down time due to conveyor jams. Compatible with a wide variety of hanger types, including retail plastic and swivel hangers.
Temperature control and heat shielding	Wide range of selectable temperature control 150° F (66° C) to 325° F (163° C) for gentle finishing of today's advanced fabrics. Stainless steel heat shield protects neck area allowing use of many types of plastic hangers.
Automac auto loading system	Hangers are automatically metered and conveyed for precise spacing through tunnel. Can be configured to accept slide-on loading from a slick rail. Enhances productivity.
Powerful, high volume airflow	Accelerates wrinkle removal via the Colmac "shake." Removes excess lint, fabric debris, thread and/or other foreign material.
High-low steam selection	Pushbutton selection of lower pressure, regulated steam versus full line pressure steam.
Steam moisturizing system	Adds moisture content to the steam at any operating pressure. Re-wets garments to enhance wrinkle removal of dry, packing and handling wrinkles.
Completely selectable, fully adjustable steam yokes	Pushbutton on-off operation via control panel. Each set of steaming tubes have fully adjustable flow via needle valves.
Stainless steel entrance and exit enclosures with exhaust system	Removes excess steam, moisture, odors, fumes or other residual chemicals from garments and exhausts them from the workspace.

Ask about our leasing options.

Form CI-0500 Infiniti Series, Effective March 2008. © All rights reserved.

## Options:

- Santa Ana variable airflow
- Automac extensions for increased loading space
- S/T version of Automac for batch loading from push rail
- Garment spacing selector
- Automac take-away conveyor
- Spray wetting system
- Power series PLC controls with multi programs, online maintenance and more

## Companion Products:

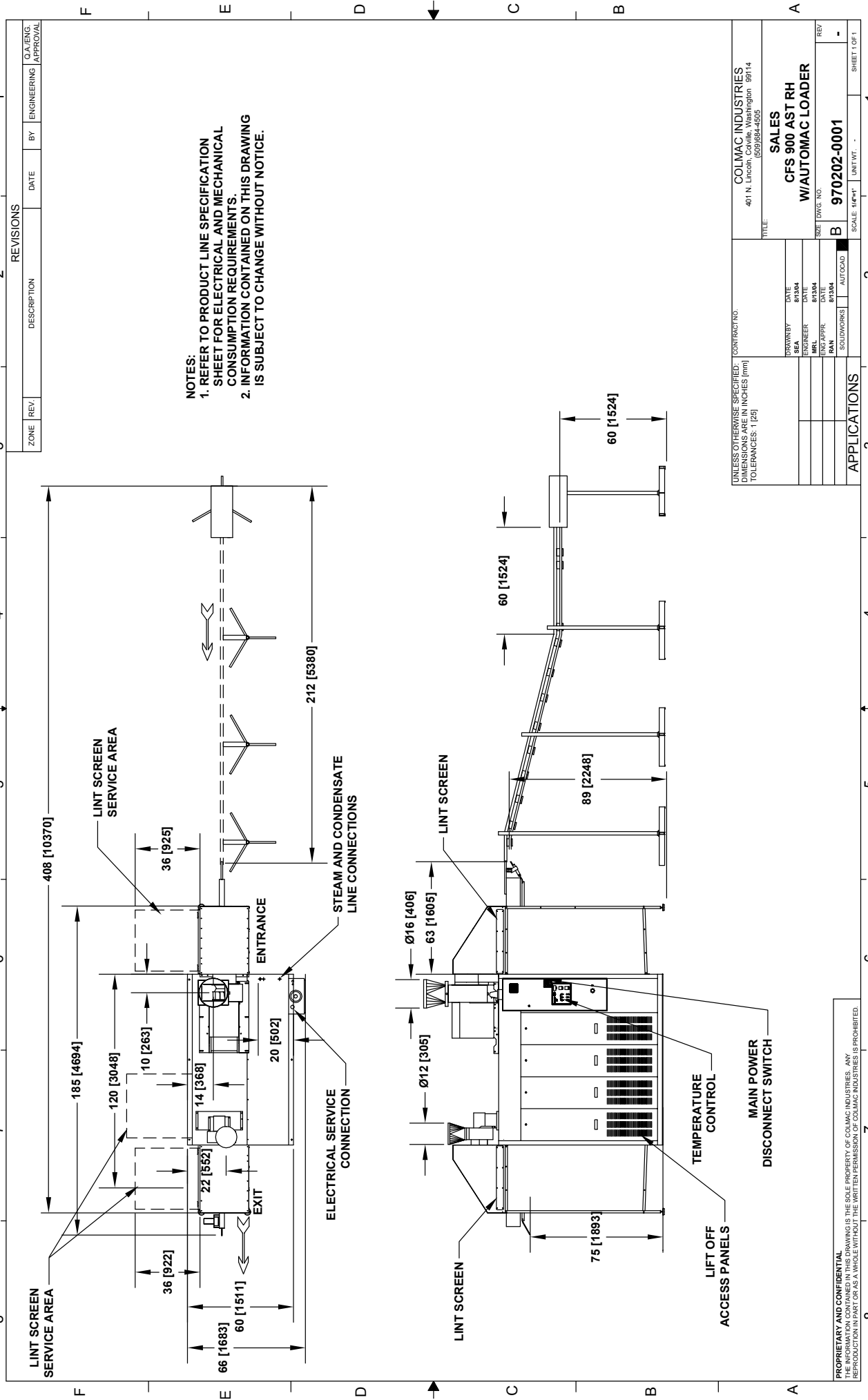
- LC-900, low conveyor frame tunnel for knitwear and garment blocking
- KWT, a long-sleeve, low conveyor frame tunnel for the knitwear version
- Pant-a-Matic 1400, one-step pant pressing system

Ask for our Literature Request Form



P.O. Box 72 • Colville, WA 99114 USA  
 Tel: (509) 684-4505 • (800) 926-5622 • Fax: (509) 684-4500  
 E-mail: sales@colmacind.com • Web site: www.colmacind.com

...Start with accuracy, finish with quality



**NOTES:**  
 1. REFER TO PRODUCT LINE SPECIFICATION SHEET FOR ELECTRICAL AND MECHANICAL CONSUMPTION REQUIREMENTS.  
 2. INFORMATION CONTAINED ON THIS DRAWING IS SUBJECT TO CHANGE WITHOUT NOTICE.

REVISIONS			
ZONE	REV.	DESCRIPTION	DATE

DATE	BY	ENGINEERING	APPROVAL

UNLESS OTHERWISE SPECIFIED: DIMENSIONS ARE IN INCHES (mm) TOLERANCES: 1 [25]		CONTRACT NO.	
DRAWN BY: SEA		COLMAC INDUSTRIES 401 N. Lincoln, Coville, Washington 98714	
CHECKED BY: MLL		SALES	
DATE: 01/30/04		CFS 900 AST RH	
DATE: 01/30/04		W/AUTOMAC LOADER	
DATE: 01/30/04		SIZE DWG. NO.	
DATE: 01/30/04		B 970202-0001	
DATE: 01/30/04		SCALE: 1/4"=1'	
DATE: 01/30/04		UNIT WT. . . . .	

**PROPRIETARY AND CONFIDENTIAL**  
 THE INFORMATION CONTAINED IN THIS DRAWING IS THE SOLE PROPERTY OF COLMAC INDUSTRIES. ANY REPRODUCTION IN PART OR AS A WHOLE WITHOUT THE WRITTEN PERMISSION OF COLMAC INDUSTRIES IS PROHIBITED.

APPLICATIONS		SHEET 1 OF 1	
1		2	
3		4	
5		6	
7		8	