

# BuckUp™ Colmac Legger *with new innovative design*

## Pant, Utility, Hot-head Press

Four different models available: Tapered legger pant press head or rectangular utility pressing head.  
Both available in steam emitting or hothead (non-steam emitting) styles to suit your needs.



- Air-bag actuator raises the buck up, vertically distributing even pressure against the upper press plate. A unique application of this proven technology.
- Gives a quality press with crisp creases. Items do not “roll over” even as the press padding wears
- Designed for a high quality finish, with ease of operation, operator safety, and reliability as top priorities

| Features  | Benefits  |
|---|---|
| BuckUp press. The buck, which is curved, presses vertically to meet the upper press plate   | Prevents garment rollover ensuring consistent, even pressing for the life of the padding  |
| Pressing pressure is applied by an air-bag actuator   | Eliminates pistons, rods, seals, and lube associated with conventional actuators, while ensuring even pressure across the entire pressing surface |
| Optional vacuum pulls steam through the fabric  | Steam penetrates the fabric, relaxing the fibers, a key step in removing wrinkles   |
| PLC controlled  | 21 <sup>st</sup> century control system offers safety features and high reliability, all with less parts  |
| Adjustable working height   | Achieves optimum ergonomic fit for operator   |
| Live steam injection from the press plate only after it is positioned directly above the buck   | Safety: live steam cannot engage unless the press plate is in the safe position   |
| Top mount machine controls  | Easy access to all controls including E-stop  |
| Safety controls include E-stop button. If pressed or power goes out while legger is in press position, the bottom buck immediately drops 3 inches | Operator remains safe even if the power or air supply is interrupted while pressing   |
| Variable cycle time   | Allows adjustment of cycle time for the perfect press across a broad range of fabric thickness  |
| Heat resistant aramid-fiber pad covers top press plate  | Protects operator against burn injuries   |

#### Specifications:

- Weight: 550 pounds (250 kg)
- Electrical: 115/60/1 (115/50/1), 1 amp
- Compressed air connection: 1" NPT (25 mm NPT)
- Vacuum connection: 2" NPT (51 mm NPT)
- Steam connections: 0.5" NPT (13 mm NPT)
- Work height adjustment: 4" (102 mm)
- Cycle-time control: 1 to 30-second selection dial
- Vacuum control: On/Off switch
- Steam trap included

#### Requirements:

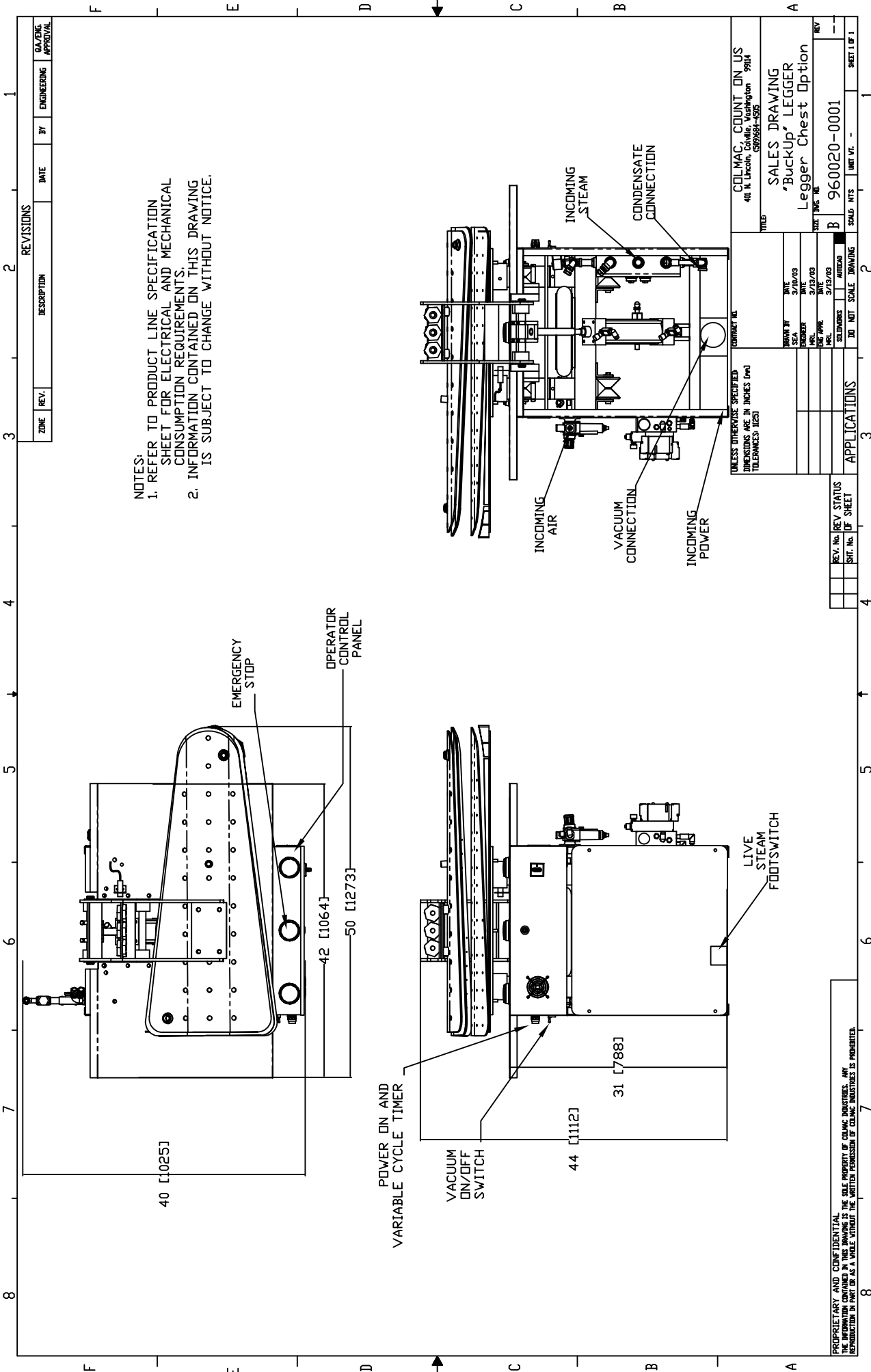
- Compressed air: 75 psig (5.2 bar) pressure, 10 SCFM (4.7 L/sec) flow
- Vacuum: 6" (152 mm) vacuum, 160 SCFM (75.5 L/sec) flow
- Steam: 80 – 125 psig (6 – 9 bar) BHP (1.5 KW)

*Companion product: Topper pant press*



P.O. Box 72 • Colville, WA 99114 USA  
Tel: (509) 684-4505 • (800) 926-5622 • Fax: (509) 684-4500  
E-mail: sales@colmacind.com • Web site: www.colmacind.com

*...Start with accuracy, finish with quality*



NOTES:  
 1. REFER TO PRODUCT LINE SPECIFICATION SHEET FOR ELECTRICAL AND MECHANICAL CONSUMPTION REQUIREMENTS.  
 2. INFORMATION CONTAINED ON THIS DRAWING IS SUBJECT TO CHANGE WITHOUT NOTICE.

| ZONE | REV. | DESCRIPTION | DATE | BY | ENGINEERING | SALES APPROVAL |
|------|------|-------------|------|----|-------------|----------------|
|      |      |             |      |    |             |                |

|  |                               |   |                          |
|--|-------------------------------|---|--------------------------|
| CONTRACT NO.<br>UNLESS OTHERWISE SPECIFIED<br>DIMENSIONS ARE IN INCHES (mm)<br>TOLERANCES: H/ESJ |                               | COLMAC COUNT ON US<br>401 N. Lincoln<br>Columbus, Ohio 43260-5505 |                          |
| DRAWN BY<br>SCA<br>DATE<br>3/10/03   | CHECKED BY<br>DATE<br>3/13/03 | TITLE<br>SALES DRAWING<br>"BuckUp" Legger<br>Legger Chest Option  | SIZE<br>TITLE BLOCK<br>B |
| REV. NO.<br>1  | REV. STATUS<br>1              | SCALE<br>NTS  | SHEET NO.<br>1           |
| SHEET NO.<br>1   | OF SHEET<br>1                 | APPLICATIONS<br>3   | SHEET 1 OF 1             |

PROPRIETARY AND CONFIDENTIAL  
 THE INFORMATION CONTAINED IN THIS DRAWING IS THE SOLE PROPERTY OF COLMAC INDUSTRIES. ANY  
 REPRODUCTION IN PART OR AS A WHOLE WITHOUT THE WRITTEN PERMISSION OF COLMAC INDUSTRIES IS PROHIBITED.