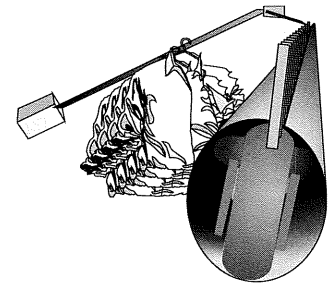


# AUTOMAC

## AUTOMATIC LOADING SYSTEM

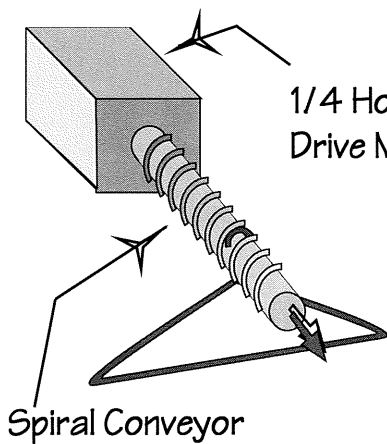


### The Automac Loading System

was developed by Colmac Industries as a complete automatic loading system in three operator loading area sizes. It utilizes a spiral conveyor that becomes a loading rail to assist in hanging garments, a storage system to hold garments, and a supply conveyor that transfers the hangered garments to the Automac loader head.

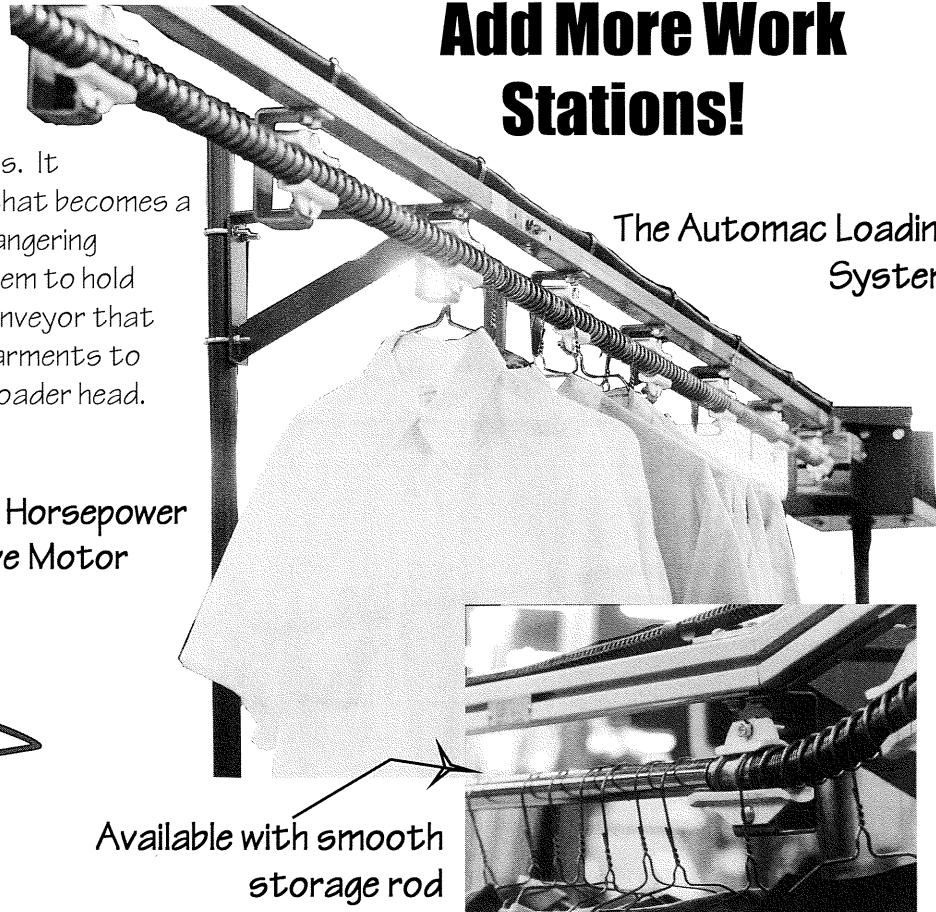
## Add More Work Stations!

### The Automac Loading System

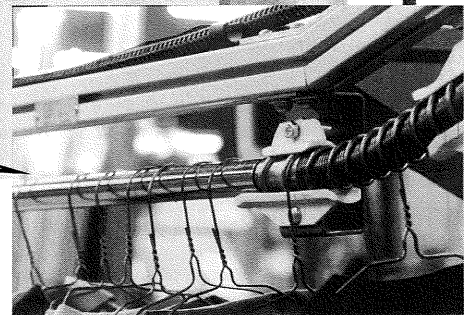


1/4 Horsepower Drive Motor

Spiral Conveyor



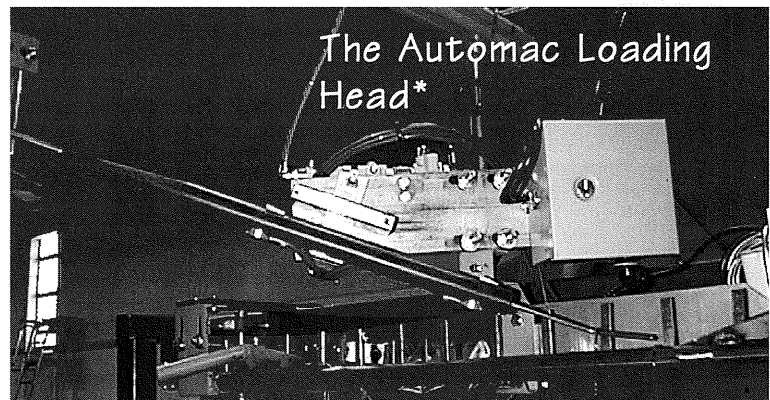
Available with smooth storage rod



Automac S/T

The Colmac Automac Loading Head loads hangered garments onto a vertical pendant conveyor system. The Colmac Automac Loading Head is an accurate and dependable tool that will drop a single hanger at a time between each pendant. Colmac also offers an optional Garment Spacing Selector that allows the operator to vary the spacing between pendants (i.e. every pendant, every other pendant, every third pendant, etc.).

The Loader head is standard with every Automac system and is also available alone. Standard 110 voltage is required and 1 CFM at 80 psi. Ask for the Colmac Automac Loader brochure.

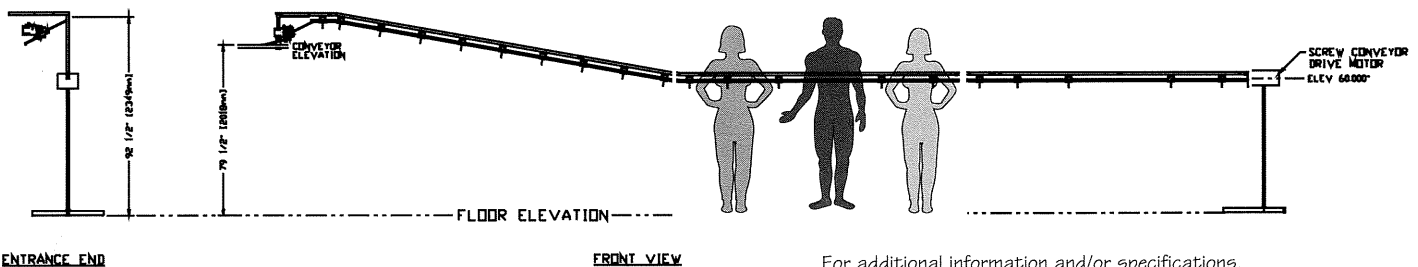
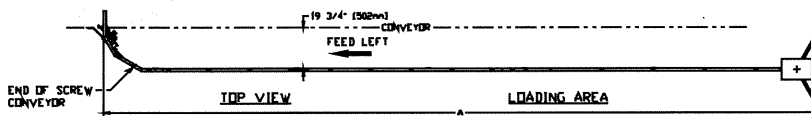


The Automac Loading Head\*

\* available separately

# The AUTOMAC is efficient and reliable as well as a valuable production aid contributing to better quality and higher production.

- ☆ Unique, simple hanger separating system requires little maintenance, no adjustment, and allows different hangers to be processed simultaneously.
- ☆ The design virtually eliminates the problem of double loading onto the tunnel finisher conveyor resulting in better quality from the finisher.
- ☆ As long as there are garments being supplied to the loading system, all the spaces on the tunnel finisher conveyor will be filled by the Automac providing for a more productive tunnel finisher.
- ☆ Loading control sensor system instantly compensates for change in conveyor speed.




For additional information and/or specifications, contact Colmac Industries, Inc.

Colmac Industries, Inc.  
 PO Box 72 400 N. Lincoln  
 Colville, WA 99114 USA  
 Tel. (509) 684-4505  
 Fax: (509) 684-4500  
 e-mail: sales@colmacind.com  
 Web Site: www.colmacind.com



**COLMAC**  
 INDUSTRIES, INCORPORATED



DO NOT USE RECYCLED HANGERS

Colmac Industries, Inc. highly recommends the use of **NEW** 13-gauge or heavier hangers when using the Colmac Automac Loading System.