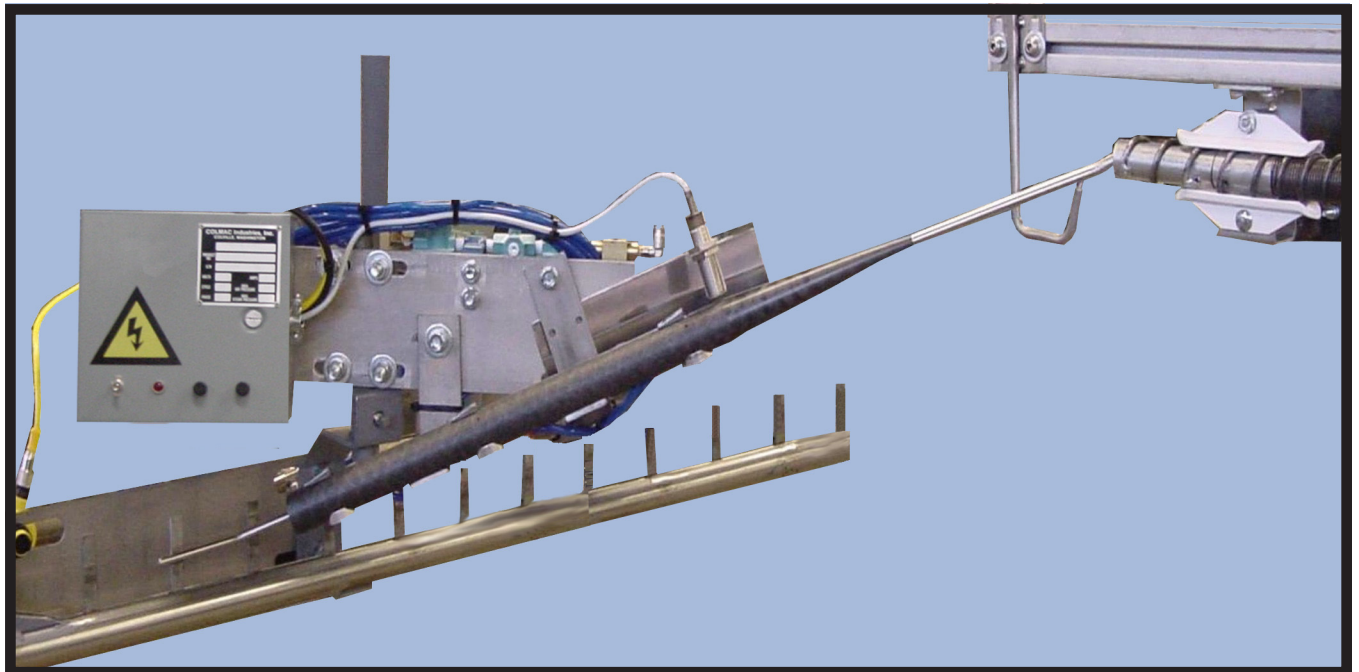




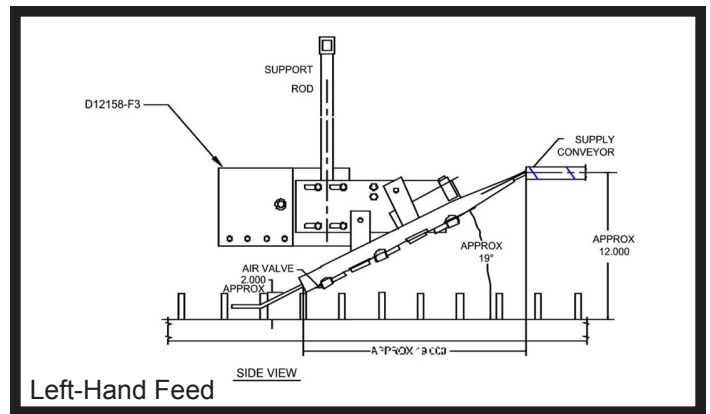
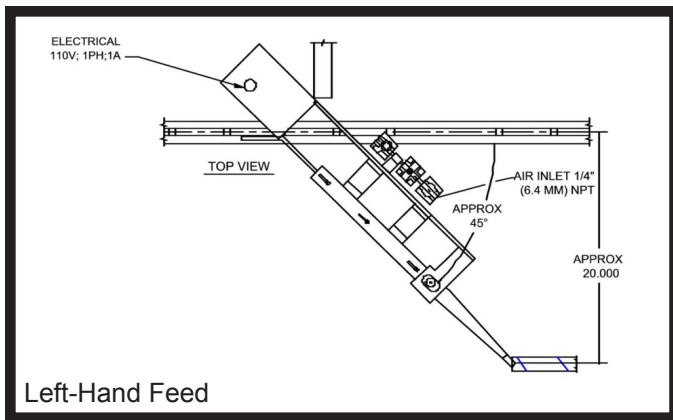
Automac Loader Head



Smart enough to stop the
feed conveyor when full.



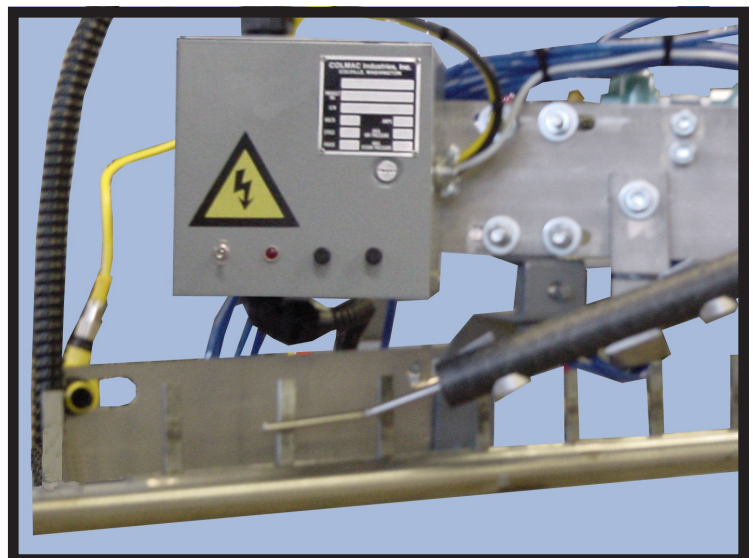
**The Colmac Conveyor Traffic Manager
controls the flow of hangered garments
as they are transferred from one
conveyor system to another with high
efficiency and timing.**



The AUTOMAC Loader Head is designed to automatically load pendant conveyors carrying hangered garments to high production tunnel finishers. It is considered to be the most reliable automatic loading system for vertical pendant conveyors available today.

Note: All photos and drawings show left-hand feed.
Also available in right-hand feed.

- Fills each slot on the conveyor as long as garments are available, making the tunnel finisher more efficient.
- Automatically adjusts loading speed to the conveyor speed even during speed changes.
- Hangered garments are automatically transferred one at a time to the pendant conveyor.
- Hangered garments are separated to prevent double loading.
- Easily adaptable to almost all vertical pendant conveyor systems.
- Required electrical power is 110 volt, 1 PH for easy installation.
- Manufactured in the U.S.A.



Form CI-0114 Automac Loader Head, Effective March 2008. © All rights reserved.



P.O. Box 72 • Colville, WA 99114 USA
Tel: (509) 684-4505 • (800) 926-5622 • Fax: (509) 684-4500
E-mail: sales@colmacind.com • Web site: www.colmacind.com

...Start with accuracy, finish with quality