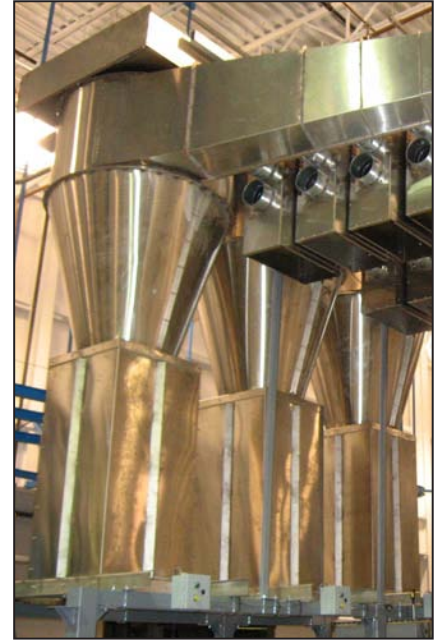


AccuSort™ SOIL CLASSIFIER SYSTEM

FROM THE LEADER IN QUALITY AND INNOVATION

Takes the high volume items off the soil belt and delivers them directly to the wash slings, reducing labor costs

- For all types of soiled items, including linens, garments...
- Reduces congestion on the soil belt, saves labor
- More accurate wash loads based on clean, dry weight
- Variable, vacuum-based system reduces motor horsepower requirements by one-third and effectively controls lint and debris
- New buffer bin design eliminates dump delay for operator
- Classifier bins can be located anywhere in the plant
- Low maintenance PLC controls; No PC computer or touch screen
- All stainless steel construction
- Custom solutions available
- Backed by the *Best Service* in the Industry



AccuSort Accumulator Bins

Features	Benefits
Direct delivery of soiled items to the wash slings	Frees soil belt of large-volume items. Saves belt space and labor costs
At a set item count, the accumulator bin opens, dumping its load into a wash sling	Results in a more accurate wash load, eliminating weighing and the use of soil factors for heavily soiled and/or damp items.
Vacuum conveying	Dirt and lint are retained within the system and filtered for periodic disposal. The workplace is kept clean, as opposed to other competing methods. Items can be conveyed almost anywhere in the plant.
Variable-On-Demand Vacuum	The vacuum fan motor runs at various speeds depending on the need for vacuum demand from the count workstations. Motor is automatically switched off when not needed.
PLC controlled with graphical status display	No PC computer and monitor necessary, increasing reliability. Simple, graphical, status display indicators.
Metal conveyance pipe with quick release clamps	Provides easy installation, less air leaks and quicker access.

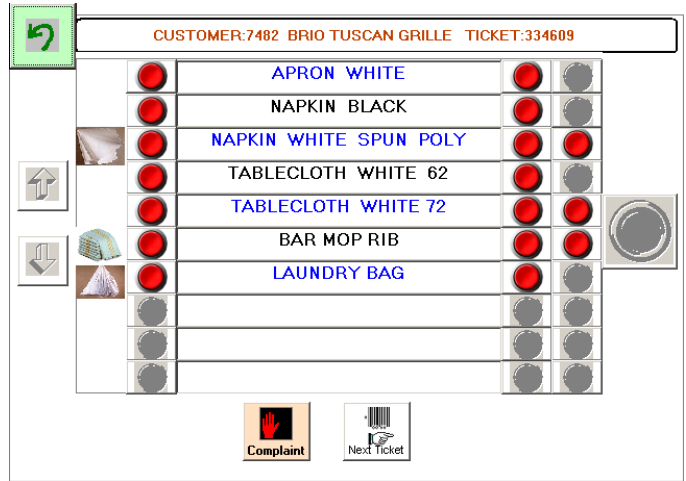
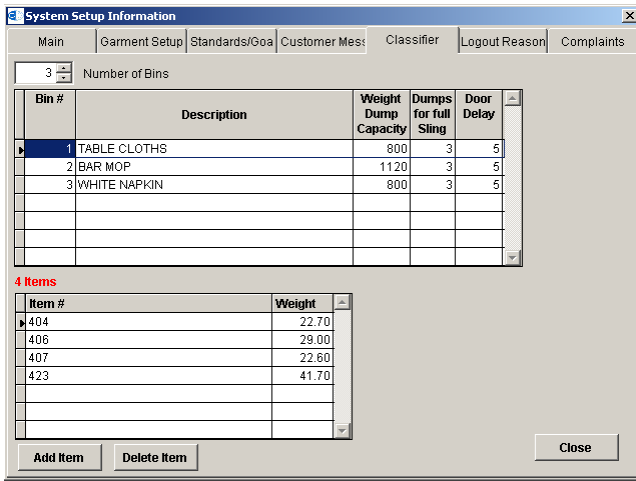
Options: RFID tag reader interface, SmartRail capabilities, hardware maintenance agreement

Companion product: AccuCounter® vacuum soiled linen counting workstation



P.O. Box 72 • Colville, WA 99114 USA
 Tel: (509) 684-4505 • (800) 926-5622 • Fax: (509) 684-4500
 E-mail: sales@colmacind.com • Web site: www.colmacind.com

... Start with accuracy, finish with quality



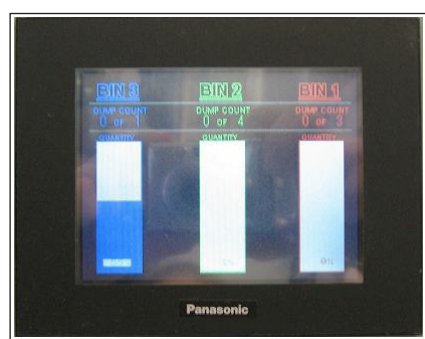
Items and their weight are assigned to the bins from the host computer. Each bin can accept many different items from the same wash classification.

Third tube classifier count station. The item selection screen allows the operator to assign only the classifier items to the classifier bins.

Form CI-0205 AccuSort, Version A. Revised July 2009 ©All rights reserved



AccuSort Bin Master Controls



Graphical Display Indicators



Individual Bin Controls

When two or more items are 50 percent (or more) of the soiled linen volume, it is more efficient for these items to be taken off the soil sorting conveyor belt and dumped directly into a sling. Plant floor space is saved and typically the need for one or two belt-sorting operators is eliminated. The conveyor belt does not stop as frequently, thus slowing production. Typically a third tube is added to each count workstation table. The tubes from each table can feed any number of bins each dedicated to a wash classification. The system is based upon the "dry weight" concept for efficiently loading the wash wheel.