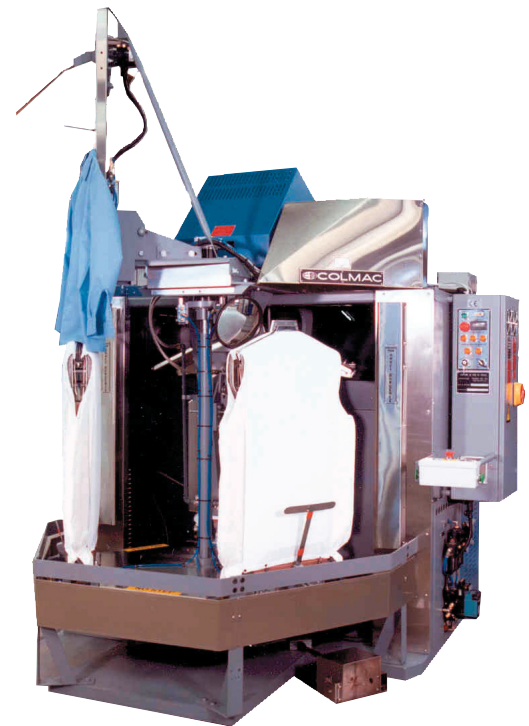


Colmac 3-CPU *Triple Buck Shirt Press*

Over 30 years of development from the industry leader in high production, high quality pressing

- Presses up to 240 shirts per hour with a single operator
- Available in three models: tail clamp, vacuum or tail clamp AND vacuum
- Single cylinder pressing system assures consistent, even pressure to both chests resulting in a premium press every time
- PLC controlled Servo drive for simple, precise, reliable mechanical function
- Low turntable and ergonomically designed foot switch insure maximum productivity while encouraging healthy operator posture
- Recirculating air system keeps energy costs down
- 12" x 3" air duct delivers maximum amount of steam and air required for superior sleeve finish
- Comes with the best service in the industry, standard
- Standard two-year limited warranty



Features	Benefits
36 different pressing cycle combinations	Provides premium finish with maximum versatility
Two-handed start switches with e-stops.	Ensures complete operator safety
Easy-to-remove insulated service panels	Keeps heat and noise inside the machine
Contoured nickel-plated pressing chests	Provides better pressing coverage - reduces leave-off marks
Huge 12" x 3" air duct – compare to the competitors' air delivery system	Delivers maximum amount of steam and air for superior sleeve finish
Overhead drive system	Simple, reliable allows mannequins to be lower
Ergonomically designed foot switch	Keeps operators healthy and productive

Specifications:

- Shipping Weight: 3900 lbs (1,773 Kg)
- Voltage (Amperage): 208/60/3 (36 A) 230/60/3 (33 A) 460/60/3 (17 A)
- Main Blower Motor: 5 HP (3.73 kW)
- Exhaust Blower Motor (Optional): 0.33 HP (0.246 kW)

Steam

- Steam Connection: 1.5 inch NPT (39.11 mm)
- Condensate Return Connection: 0.75 inch (19.05 mm)
- Supply Pressure: 65-125 PSI (4.49 – 8.63 BAR)
- Consumption, Maximum: 10 BHP (157 Kg/hr)
- Steam Traps: Included

Compressed Air

- Line Connection: 0.50 inch NPT (13.00 mm)
- Supply Pressure: 100 PSI (6.89 BAR)
- Consumption, Maximum: 4.10 SCFM (0.24 L/second)

Options:

- Exhaust blower system removes excess heat and steam from the workplace
- Hand-held water spray gun is used to dampen difficult wrinkles or dry areas on the garment to improve quality
- Two-station sort adds a diverting cylinder and control valve to the unloader allowing the operator to unload selected garments onto a separate storage rail (not included)
- Multiple drop system allows two shirt units to automatically unload onto a common screw take-away conveyor
- Collar expander for formalwear use

Models Available:

- 3-CPU with tail clamp
- 3-CPU with vacuum
- 3-CPU with tail clamp AND vacuum

Companion products: [Collar 'n Cuff Press](#)
[Collar Press](#)
[Laser Sleeve Press](#)

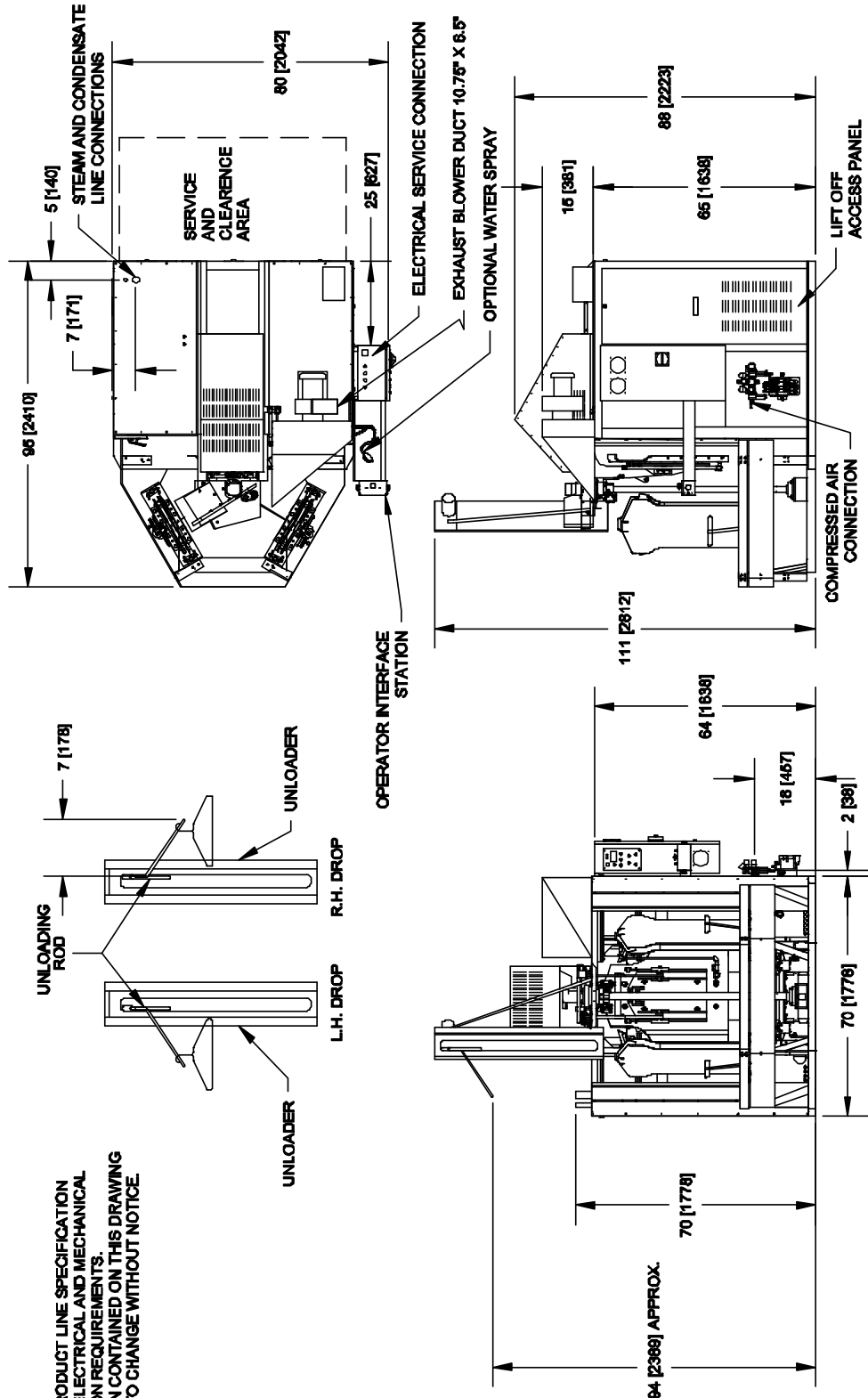


P.O. Box 72 • Colville, WA 99114 USA
 Tel: (509) 684-4505 • (800) 926-5622 • Fax: (509) 684-4500
 E-mail: sales@colmacind.com • Web site: www.colmacind.com

...Start with accuracy, finish with quality

8	7	6	5	4	3	2	1
REVISE		DESCRIPTION		DATE		BY ENGINEERING APPROVAL	

NOTES:
 1. REFER TO PRODUCT LINE SPECIFICATION SHEET FOR ELECTRICAL AND MECHANICAL CONSUMPTION REQUIREMENTS.
 2. INFORMATION CONTAINED ON THIS DRAWING IS SUBJECT TO CHANGE WITHOUT NOTICE.



UNLESS OTHERWISE SPECIFIED: DIMENSIONS ARE IN INCHES (mm) TOLERANCE: 1.000		CONTINUED NO.		COLMAC INDUSTRIES 401 N. Liberty, Covina, Washington 97114 (503)584-4525	
PROPERTY		DATE		TITLE	
PART NO.		REV.		INSTALLATION AND SALES	
REV. DATE		REV. DATE		3CPU WITH OPTIONAL	
REV. DATE		REV. DATE		EXHAUST BLOWER SYSTEM	
REV. DATE		REV. DATE		REV.	
REV. DATE		REV. DATE		B 960007-0001	
REV. DATE		REV. DATE		SCALE: 3/8\"/>	
REV. DATE		REV. DATE		SHEET 1 OF 1	

PROPRIETARY AND CONFIDENTIAL
 THE INFORMATION CONTAINED IN THIS DRAWING IS THE SOLE PROPERTY OF COLMAC INDUSTRIES. ANY REPRODUCTION IN PART OR AS A WHOLE WITHOUT THE WRITTEN PERMISSION OF COLMAC INDUSTRIES IS PROHIBITED.